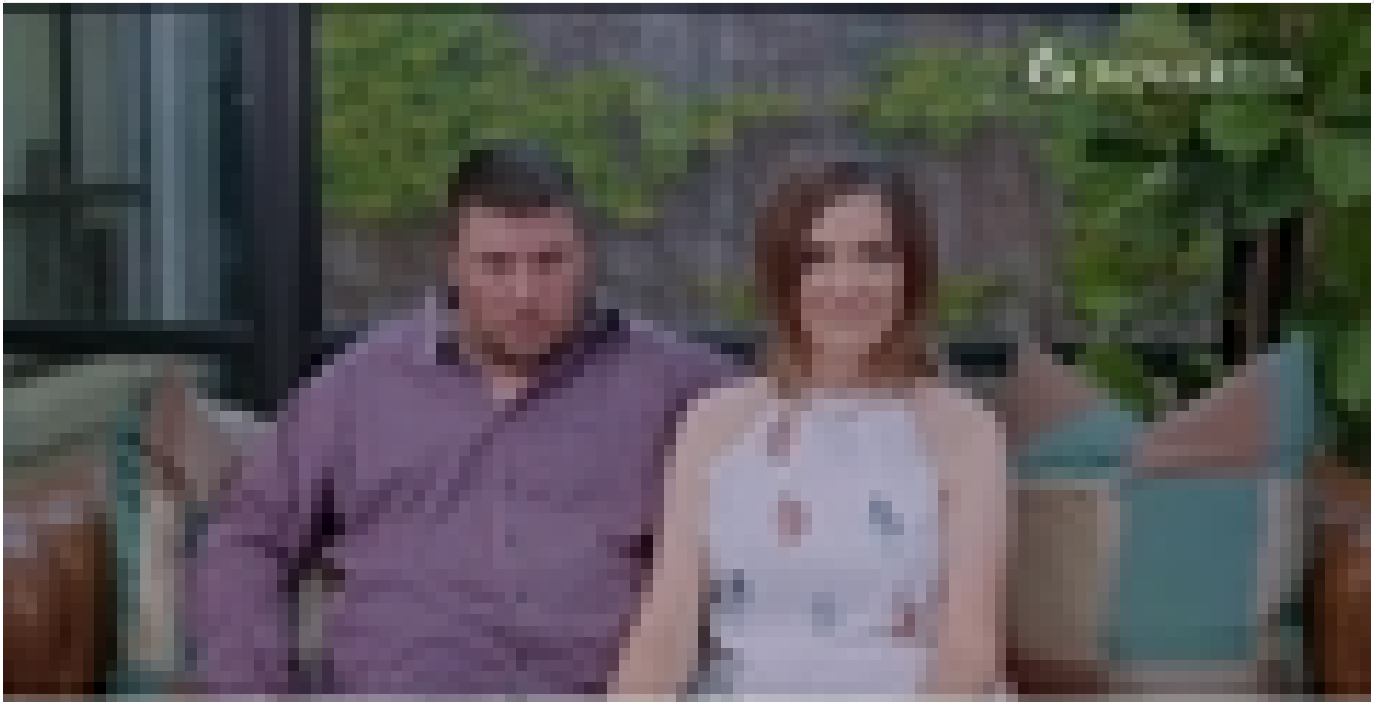


Multiple sclerosis (MS)

Patient Journeys



VIDEO



VIDEO

Living like you

What is Living Like You?

Living Like You is here to empower and support people impacted by Multiple Sclerosis (MS) to live full lives, through sharing stories, top tips and the latest research.

It is possible to do more than simply live with MS. With a wealth of resources and support available, and therapies to manage symptoms of MS, people all around the world are finding that it's possible to continue living their ordinary lives by managing their symptoms and staying positive.

➤ Gain more MS knowledge at LivingLikeYou.com



Scan QR code
for website



Novartis South Africa (Pty) Ltd. Magwa Crescent West, Waterfall City, Jukskei View 2090. Tel. +27 11 347 6600.
Co. Reg. No. 1946/020671/07. Novartis Call Centre 0861 929 929. ZA2306093087 Exp.: 03/2025



MS journeys: Empowering people impacted by MS

MS Journeys

Empowering people
impacted by MS
one topic at a time

MS Journeys, brought to you by Novartis, is a one-of-a-kind podcast series that addresses topics relatable and relevant to people with MS and their loved ones. Our hosts, and their guests, don't hold back as they discuss topics such as the need to address diversity, equity, and inclusion in the MS community.

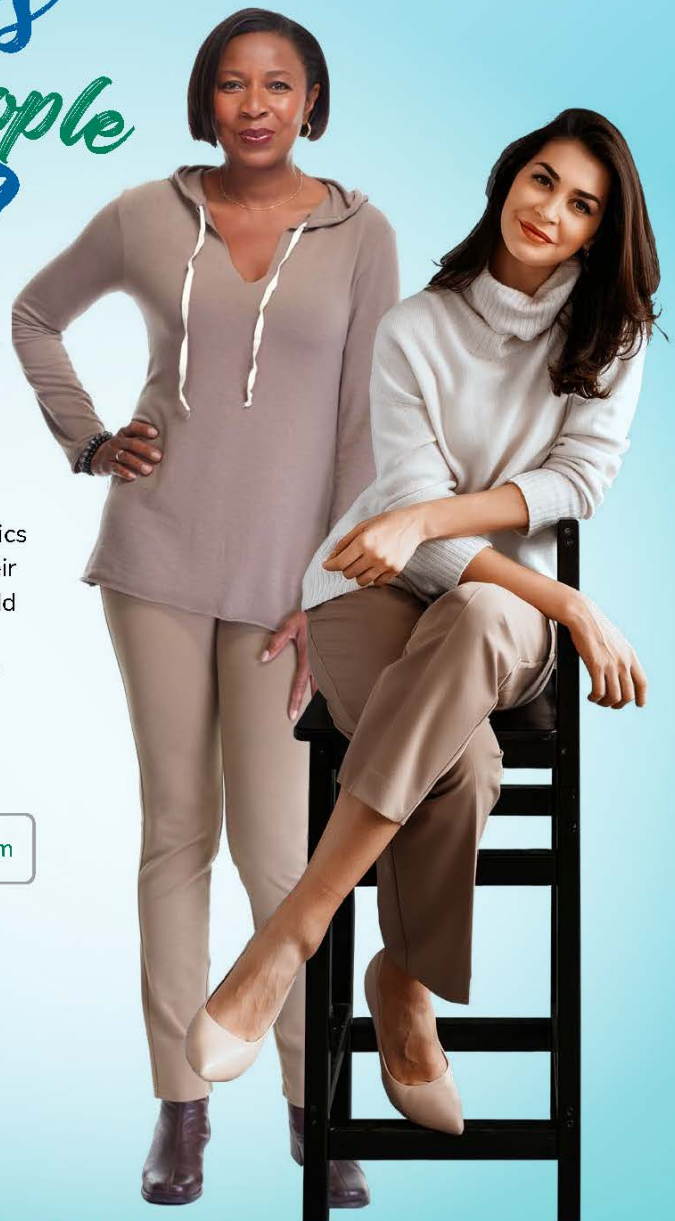
➤ Gain more MS knowledge at [LivingLikeYou.com](https://www.livinglikeyou.com)



Scan QR code
for website



Novartis South Africa (Pty) Ltd. Magwa Crescent West, Waterfall City, Jukskei View 2090. Tel. +27 11 347 6600.
Co. Reg. No. 1946/020671/07. Novartis Call Centre 0861 929 929. ZA2306093087 Exp.: 03/2025



Source URL: <https://www.novartis.com/za-en/multiple-sclerosis-ms>

List of links present in page

- <https://www.novartis.com/za-en/za-en/multiple-sclerosis-ms>
- https://www.novartis.com/za-en/za-en/sites/novartis_za/files/Living%20like%20you%20awareness%20card%203.pdf
- https://www.novartis.com/za-en/za-en/sites/novartis_za/files/Living%20like%20you%20awareness%20card%202.pdf